

eStore – Add Non-Furniture Catalogues

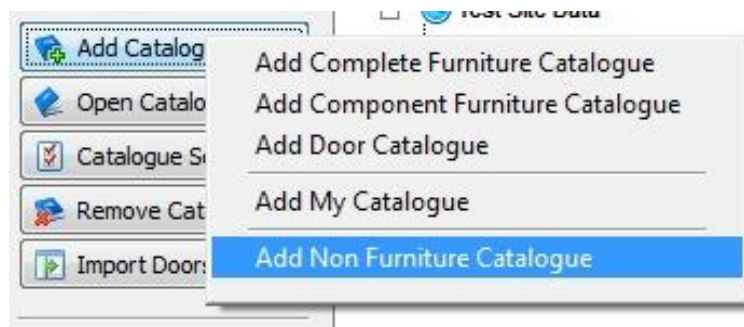
There are three main variations of catalogue structure that eStore uses when displaying products online, which are termed either Furniture, Non-Furniture or My Catalogues.

Furniture Catalogues, due to their complexities, are generated by the EQ Data Department, and are used in conjunction with a Level 3 web-site.

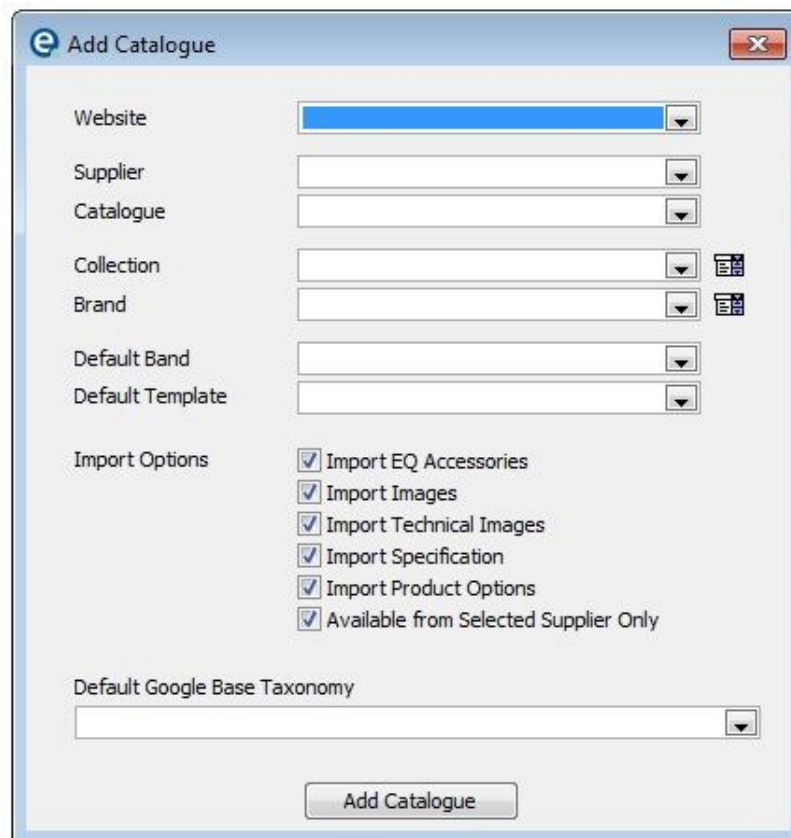
Non-Furniture Catalogues are those that contain flat products such as Sinks, Taps, Microwave Ovens, Baths, Showers etc. etc. As are your own set of *My Catalogues*.

To add a Non-Furniture Catalogue:

- 1 - Select the **Add Catalogue** button from the left of the eStore screen
- 2 - Then **Add Non Furniture Catalogues**



Where you'll be presented with the following screen:

A screenshot of a dialog box titled 'Add Catalogue'. The dialog box contains several fields and options. The fields are: 'Website' (a dropdown menu), 'Supplier' (a dropdown menu), 'Catalogue' (a dropdown menu), 'Collection' (a dropdown menu with a list icon), 'Brand' (a dropdown menu with a list icon), 'Default Band' (a dropdown menu), and 'Default Template' (a dropdown menu). Below these fields is a section for 'Import Options' with six checkboxes, all of which are checked: 'Import EQ Accessories', 'Import Images', 'Import Technical Images', 'Import Specification', 'Import Product Options', and 'Available from Selected Supplier Only'. At the bottom of the dialog box is a 'Default Google Base Taxonomy' dropdown menu and an 'Add Catalogue' button.

eStore – Add Non-Furniture Catalogues... cont.

You will now need to fulfil the drop downs to commence with adding the catalogue to your eStore Module. These are the initial failsafe defaults that are applied to the catalogue, all of which can be altered after the catalogue has been added.

Compulsory (required before catalogue can be used):-

Website | which website is the catalogue to be added?

Supplier | which Supplier is the catalogue from?

Catalogue | what catalogue name is to be added?

Collection | which Collection is the catalogue going to be contained in?
If a relevant one isn't available then you can create another via the icon to the right.

Brand | what are the products in this catalogue going to be branded as?
If a relevant one isn't available then you can create another via the icon to the right.

Default Band | which delivery band will be applied to this catalogue?
If one isn't available, this process cannot be continued, so please refer to the delivery charges worksheet to carry on.

Default Template | Select *Standard Template* unless stated otherwise by your designer.

Optional (can be setup afterwards):-

Import Options | these options are selected by default as this is the most efficient setting.

Default Google Base Taxonomy | the products can be used as part of a Google Merchant Account. For more information on Google Taxonomy please visit Google own support services for advice on this option.

When all fields are completed select **Add Catalogue** and the catalogue name will appear in the catalogue names list on the eStore screen.